

equipment list

Heller_Dynam_Bed_2L2C

device tag	number	denomination	Type	Manufacturer	Heller no.
+H1-300.1	1	cooling unit	ERK10W-PWT-R134a Heller-UL 400V 50Hz, 460V 60Hz 5,2kW	BKW	01.112899
+EC-300.2	1	control cabinet cooling			
+EC-300.3	1	control cabinet cooling			
+MU-300.20	1	plastic pipe	PA 12x1,5 1 820 712 103	AVENTICS	01.093304
+MU-300.21	1	plastic pipe	PA 12x1,5 1 820 712 103	AVENTICS	01.093304
+MU-310.1	1	directional control valve	SGH130A-30G10Y-5WZ G3/8 30bar M12x1	SMC	01.102730
+MU-310.2	1	plastic pipe	PA 8x1 1 820 712 102	AVENTICS	01.093303
	1	check valve	RHD12LOMD-CF	Parker	01.002260

Änderungen nur im CAD-Original!
 Changes in CAD only!
 Mudanças no original CAD somente!

© Copyright reserved - Gebr. HELLER Maschinenfabrik GmbH, D-72622 Nürtingen
 Schutzvermerk nach DIN 34 beachten!
 Attention! Observe DIN 34
 Atenção! Atente DIN 34

← &L+M/1

+H1/1 →

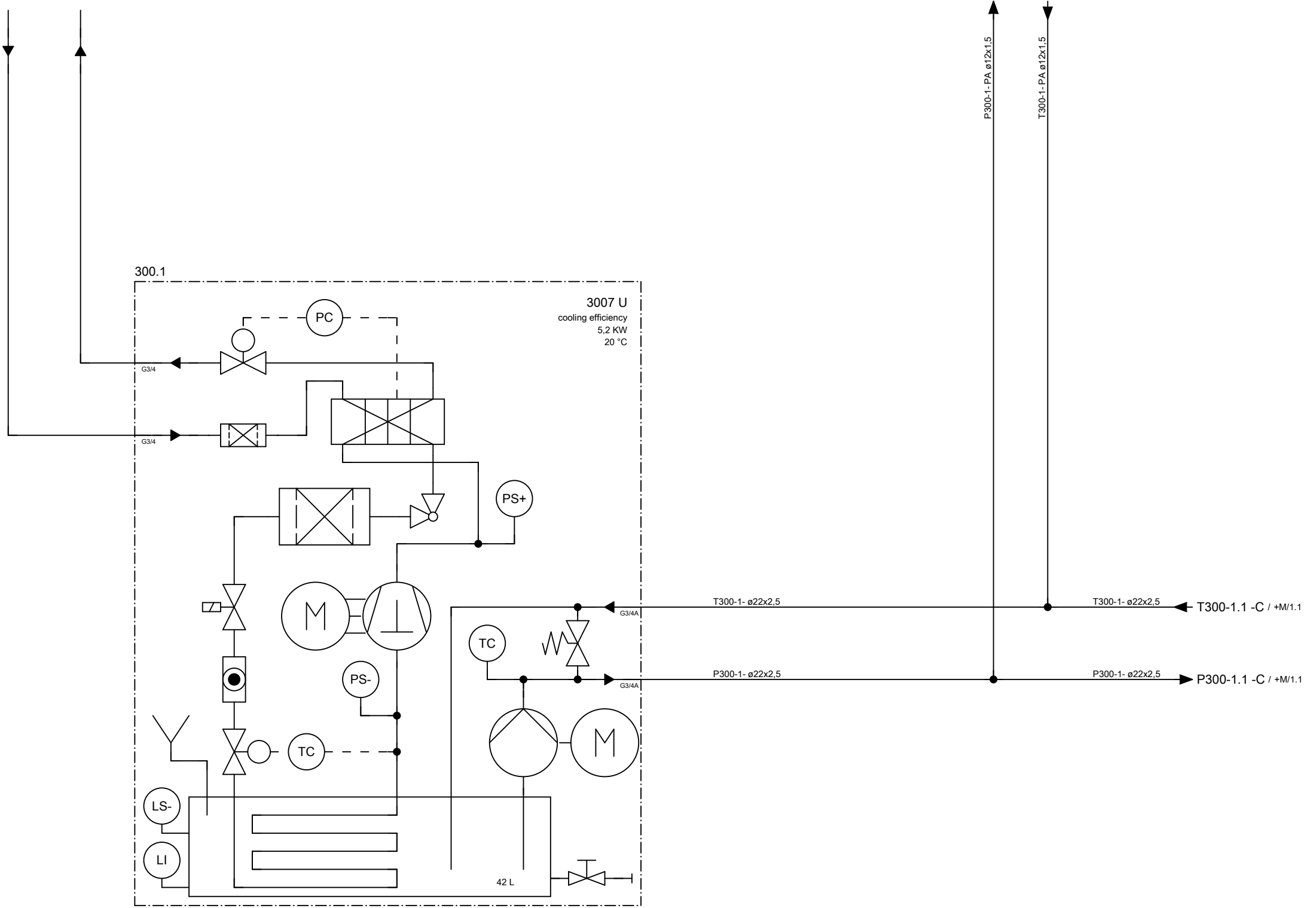
ART DER AENDERUNG/REVISION/DESCRIÇÃO DE ALTERAÇÃO		Index	ZONE/ZONA	DATUM/DATE	NAME/NOME	PROJ./PROJ/ PROJ.	<div style="text-align: center; font-weight: bold; font-size: 1.2em;">HELLER</div>	KUNDE/CUSTOMER/CLIENTE	PLAN/PLAN/PLANO
CAD-System		URSPPR./ORIG.	GEPR./CHECK./REG.			M-NR/M-NO/ M-NO		Paccar, Columbus USA	project
ePLAN 2.2.5		ERS./REP.	BEARB./CHG./ALT.	14.07.2016	AHFE/ZAJ	M54800	BENENNUNG/NAME/DENOMINAÇÃO Device tag list cooling water	INV-NR/INV-NO/NO-INV	MP.05480000_F
		ERS.D./REP.W.	GEZ./DRAWN/DES.	14.07.2016	AHFE/ZAJ	H 10000 MC - A-Axis			Machine
								Document type	&C cooling water diagram
								Mounting position	
								Page name	0

+M/1.5
300
machine cooling system

Seamless precision steel pipe acc. to DIN ISO 10763 E235+N, galvanised, chromium6-free
Parker screw connections, type EO-2 Plus, chromium6-free, male stud connector with soft seal acc. to ISO 1179-2 type E
Parker 2SC-462 hose acc. to ISO 11237-1 EN 857, hose fitting acc. to DIN ISO 12151-2, CA form

reservoir capacity 42 L
process medium Demineralised water with anti-corrosion agent
mixing ratio see plates on cooling unit

cooling water provided by customer
max. 35°C



Änderungen nur im CAD-Original!
Changes in CAD only!
Mudanças no original CAD somente!

© Copyright reserved - Gebr. HELLER Maschinenfabrik GmbH, D-72822 Nürtingen
Schutzvermerk nach DIN 34 beachten!
Attention! Observe DIN 34
Atenção! Atenção DIN 34

← +/0 +MU/1 →

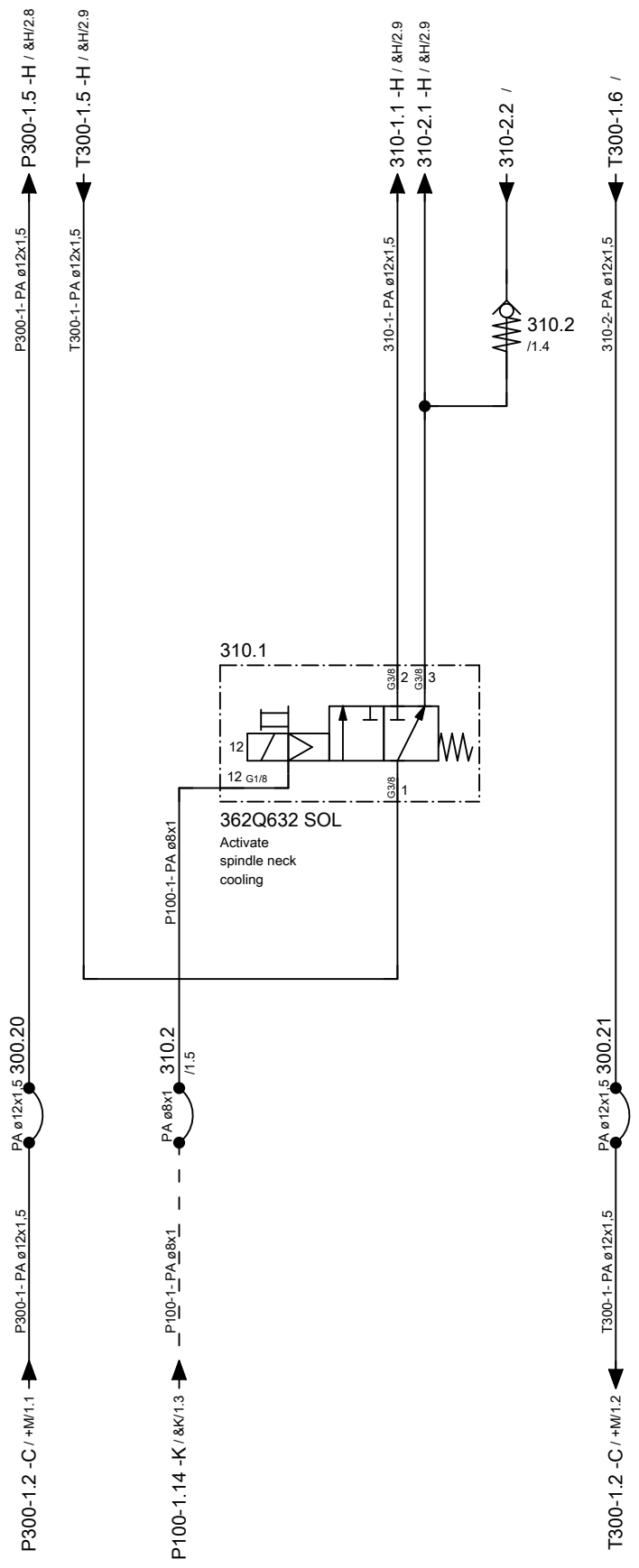
				PROJ./PROJ./PROJ. 54800.00	HELLER	KUNDE/CUSTOMER/CLIENTE Paccar, Columbus USA	PLAN/PLAN/PLANO project MP.05480000_F	
				M-NR/M-MO/ M-NO M54800		BENENNUNG/NAME/DENOMINAÇÃO cooling water diagram	INV-NR/INV-NO/NO-INV 01.106964	Machine =M54800 Document type &C cooling water diagram Mounting position +H1 HELP1 Page name 1
ART DER AENDERUNG/REVISION/DESCRIÇÃO DE ALTERAÇÃO	Index	ZONE/ZONA	DATUM/DATE	NAME/NOME				
CAD-System	URSPR./ORIG.	GEPR./CHECK./REG.						
ePLAN 2.2.5	ERS./REP.	BEARB./CHG./ALT.	13.07.2016	AHFE/ZAJ				
	ERS.D./REP.W.	GEZ./DRAWN/DES.	15.03.2016	AHFE/HOP				
				WERKSTÜCK/ PART/PEÇA				

Heller_2L

Änderungen nur im CAD-Original!
Changes in CAD only!
Mudanças no original CAD somente!

© Copyright reserved - Gebr. HELLER Maschinenfabrik GmbH, D-72622 Nürtingen
Schutzvermerk nach DIN 34 beachten!
Attention! Observe DIN 34
Atenção! Atenção DIN 34

310
Spindle
neck cooling



← +H1/1

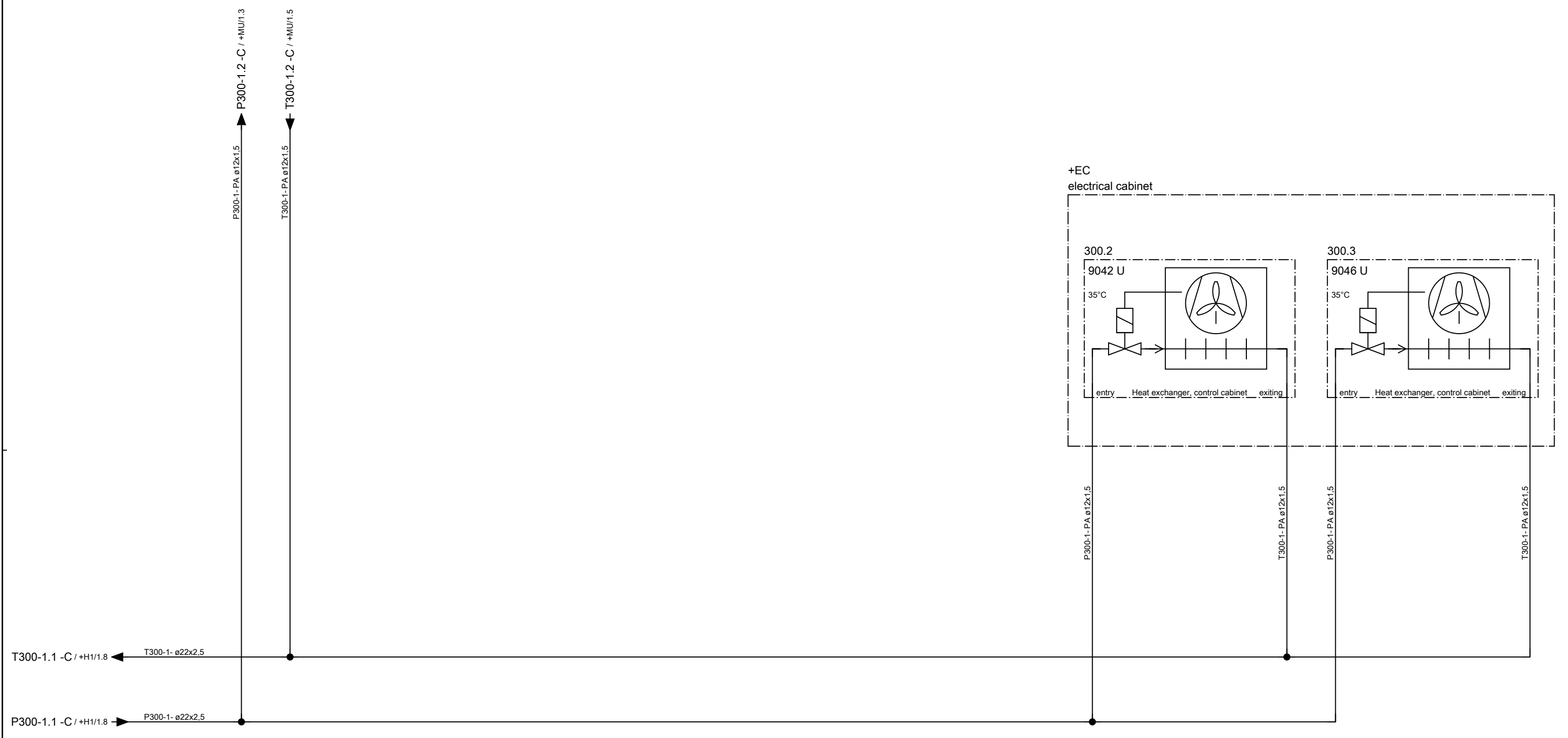
+M/1 →

ART DER AENDERUNG/REVISION/DESCRIÇÃO DE ALTERAÇÃO		Index	ZONE/ZONA	DATUM/DATE	NAME/NOME	PROJ./PROJ./PROJ.	HELLER	KUNDE/CUSTOMER/CLIENTE	PLAN/PLAN/PLANO
CAD-System		URSPR./ORIG.	GEPR./CHECK./REG.			M-NR/M-NO/ M-NO		Paccar, Columbus USA	project
ePLAN 2.2.5		ERS./REP.	BEARB./CHG./ALT.	13.07.2016	AHFE/ZAJ	H 10000 MC - A-Axis	cooling water diagram	INV-NR/INV-NO/NO-INV	Machine
		ERS.D./REP.W.	GEZ./DRAWN/DES.	15.03.2016	AHFE/HOP	WERKSTÜCK/ PART/PEÇA			Document type
								Mounting position	&C cooling water diagram
								Page name	+MU unit
									1

Änderungen nur im CAD-Original!
Changes in CAD only!
Mudanças no original CAD somente!

© Copyright reserved - Gebr. HELLER Maschinenfabrik GmbH, D-72622 Nürtingen
Schutzvermerk nach DIN 34 beachten!
Attention! Observe DIN 34
Atenção! Atente DIN 34

+H1/1.4
300
machine cooling system



← +MU/1

&K+/0 →

ART DER AENDERUNG/REVISION/DESCRIÇÃO DE ALTERAÇÃO		Index	ZONE/ZONA	DATUM/DATE	NAME/NOME	PROJ./PROJ/ PROJ.	54800.00	HELLER	KUNDE/CUSTOMER/CLIENTE	PLAN/PLAN/PLANO	
CAD-System		URSPR./ORIG.	GEPR./CHECK./REG.	BEARB./CHG./ALT.	AHFE/ZAJ	M-NR/M-NO/ M-NO	M54800		Paccar, Columbus USA	project	MP.05480000_F
ePLAN 2.2.5		ERS./REP.	GEZ./DRAWN/DES.	13.07.2016	AHFE/HOP	TYP/TYPE/ TIPO	H 10000 MC - A-Axis	cooling water diagram	INV-NR/INV-NO/NO-INV	Machine	=M54800
		ERS.D./REP.W.		15.03.2016		WERKSTÜCK/ PART/PEÇA				Document type	&C
									Mounting position	+M	machine
									Page name	1	

Heller_2L